

OGA DIAGONAL: 11.62 [295.18]
 VA DIAGONAL: 10.84 [275.46]
 PA DIAGONAL: 10.25 [260.26]

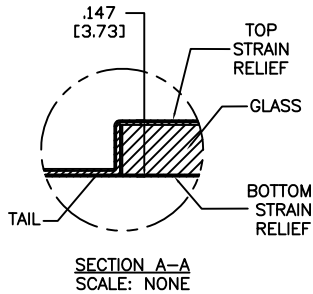
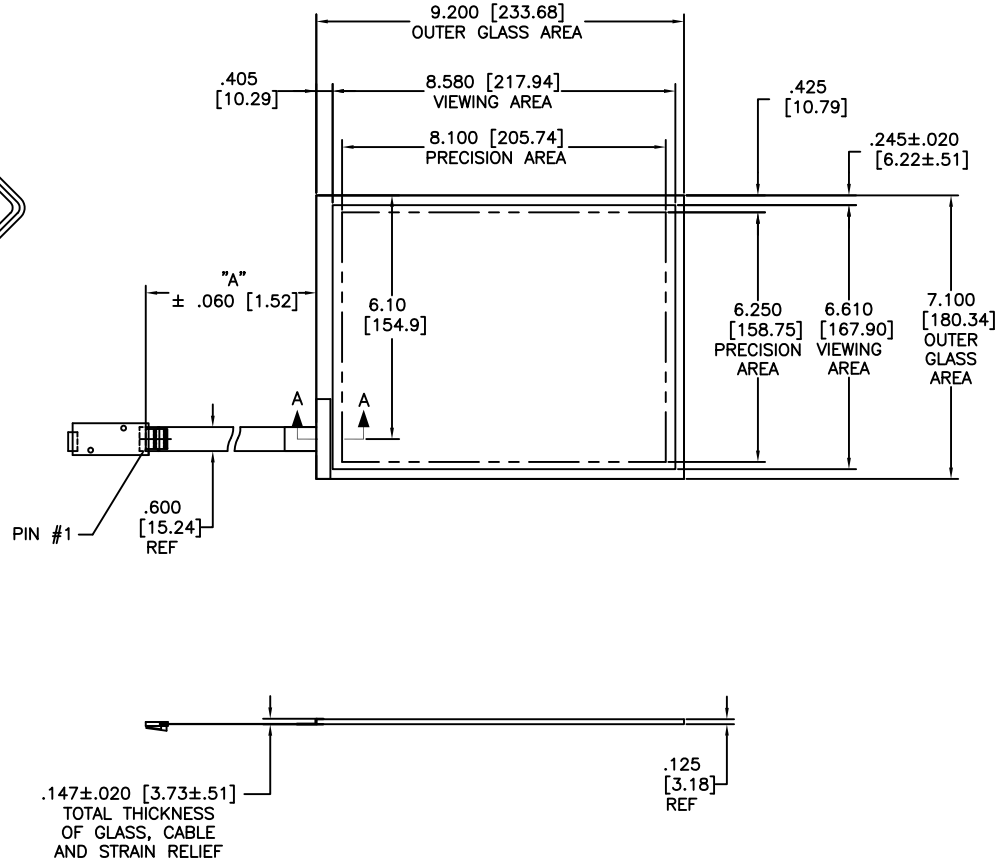
TOP LEVEL NUMBER	TYPE	DIM "A" (TOTAL GLASS TO CONNECTOR)	A/G FINISH	PRODUCT SPEC
98-0003-3106-0	CX111	4.27" [108.46]	AG500	36452

ESD CLAMSHELL CASE IS USED WITH ALL TERMINATIONS.



CX111

98-0003-2990-8
 USB CONTROLLER
 SOLDER SIDE



NOTES:

1. WEIGHT OF GLASS IN GRAMS: 321±10%
2. 5 PIN AMP CONNECTOR LATCH STYLE HOUSING P/N: 487526-4
 TIN CONTACTS P/N: 2-487406-4
 HOUSING ORIENTED WITH LATCH DOWN

PINOUT	
1	LR
2	LL
3	SHIELD
4	UL
5	UR

UNITS	INCHES [MM]
TOLERANCES UNLESS OTHERWISE SPECIFIED	
.X	±
.XX	±.03 [.76]
.XXX	±.015 [.38]
ANGLES	±1°
THIRD ANGLE PROJECTION	
DO NOT SCALE DRAWING	
SCALE	1 = 1

3M 3M TOUCH SYSTEMS
 METHUEN, MA
 USA

© COPYRIGHT 2005
 THIS DOCUMENT IS COPYRIGHTED PROPERTY OF THE 3M COMPANY AND MAY NOT BE REPRODUCED WITHOUT 3M WRITTEN PERMISSION OR USED OR DISCLOSED FOR OTHER THAN 3M AUTHORIZED PURPOSES.

DRAWN S.Berard 12/08

03	REVISE PER CO 030743	7/09	SB
02	REVISE PER CO 029953	1/09	SB
01	INITIAL RELEASE PER CO 029835	12/08	SB
REV	CHANGE NOTICE	DATE	DRW

TITLE

MARKETING DRAWING
 SCT32NN 10.84" CX

DWG FORMAT AUTOCAD SHEET 1 OF 1

SIZE C DOCUMENT NO. 36375-MKT REV 03